

Worklist: 1249

<u>LAB_CASE</u>	<u>ITEM</u>	<u>TASK_ID</u>	<u>DESCRIPTION</u>	
M2016-0837	1	63086	6.1.2 Blood Cannabinoids by LC	
M2016-0911	1	63087	6.1.2 Blood Cannabinoids by LC	
M2016-1177	5	63089	6.1.2 Blood Cannabinoids by LC	
P2016-0641	1	63094	6.1.2 Blood Cannabinoids by LC	
P2016-0642	1	63095	6.1.2 Blood Cannabinoids by LC	
P2016-0668	1	63096	6.1.2 Blood Cannabinoids by LC	
P2016-0694	1	63097	6.1.2 Blood Cannabinoids by LC	
P2016-0752	1	63098	6.1.2 Blood Cannabinoids by LC	
P2016-0761	1	63100	6.1.2 Blood Cannabinoids by LC	
P2016-1006	1	63102	6.1.2 Blood Cannabinoids by LC	

reviewed 8/24/16



Worklist Report

Worklist Path:	C:\MassHunter\ISP Methods\worklists\CS Combined 081816.wkl
Date Modified:	08/18/2016 11:16:26 AM
Date Printed:	08/18/2016 11:16:33 AM

Worklist Run Parameters

Operator Name:	62340
Run Type:	Standard Start
Part of Method to Run:	Acquisition Only
Execution for Acquisition-DA:	Synchronous
Acquisition Method Path:	C:\MassHunter\ISP Methods\Acquisition
DA Method Path:	D:\MassHunter\methods
Data File Path:	C:\MassHunter\Data\2016\Combined\072216 CS
Pre-Worklist Script:	---
Post-Worklist Script:	SCP_InstrumentStandby(){MH_Acq_Scripts.exe}
Acquisition Clean Up Script:	SCP_InstrumentStandby(){MH_Acq_Scripts.exe}
Overlapped Injection:	No
Clear sample selection after run:	Yes
Wait Time for Ready(Min):	10
Threshold Disk Value(GB):	10
Comment:	---

Plate Barcode Information

Plate	Barcode
P1	
P2	


Worklist Table

Sample Position	Sample Name	Method	Data File	Sample Type	Level Name	Comment	Info.
P2-A1	Blank	isp blood cannabinoids Poky 2016-1.m	Blank1-r001.d	Blank		AM 6.1.2 Cannabinoids by LCQQQ	
P2-A1	Blank	isp blood cannabinoids Poky 2016-1.m	Blank2-r001.d	Blank		AM 6.1.2 Cannabinoids by LCQQQ	
P2-A2	Blood: 1_5 ng/mL	isp blood cannabinoids Poky 2016-1.m	B_CAL1-r001.d	Calibration	1	AM 6.1.2 Cannabinoids by LCQQQ	c-THC @5ng/mL, all others @1 ng/mL
P2-A3	Blood: 2_10 ng/mL	isp blood cannabinoids Poky 2016-1.m	B_CAL2_r001.d	Calibration	2	AM 6.1.2 Cannabinoids by LCQQQ	c-THC @10ng/mL, all others @2 ng/mL
P2-A4	Blood: 5_25 ng/mL	isp blood cannabinoids Poky 2016-1.m	B_CAL3_r001.d	Calibration	3	AM 6.1.2 Cannabinoids by LCQQQ	c-THC @25ng/mL, all others @5 ng/mL
P2-A5	Blood: 10_50 ng/mL	isp blood cannabinoids Poky 2016-1.m	B_CAL4_r001.d	Calibration	4	AM 6.1.2 Cannabinoids by LCQQQ	c-THC @50ng/mL, all others @10 ng/mL
P2-A6		isp blood cannabinoids Poky 2016-1.m	B_CAL5_r001.d	Calibration	5		c-THC @125ng/mL, all

Sample Position	Sample Name	Method	Data File	Sample Type	Level Name	Comment	Info. 
	Blood: 25_125 ngmL					AM 6.1.2 Cannabinoids by LCQQQ	others @25 ng/mL
P2-A7	Blood: 50_250 ngmL	isp blood cannabinoids Poky 2016-1.m	B_CAL6_r001.d	Calibration	6	AM 6.1.2 Cannabinoids by LCQQQ	c-THC @250ng/mL, all others @50 ng/mL
P2-A8	Blood: 100_500 ngmL	isp blood cannabinoids Poky 2016-1.m	B_CAL7_r001.d	Calibration	7	AM 6.1.2 Cannabinoids by LCQQQ	c-THC @500ng/mL, all others @100 ng/mL
P2-A1	Blank	isp blood cannabinoids Poky 2016-1.m	Carryover blank1_r001.d	Blank		AM 6.1.2 Cannabinoids by LCQQQ	
P2-A9	Blood Negative Control	isp blood cannabinoids Poky 2016-1.m	B-NC-r001.d	Sample		AM 6.1.2 Cannabinoids by LCQQQ	Negative Blood UTAK Lot B1013
P2-B1	Blood PC 1	isp blood cannabinoids Poky 2016-1.m	B-POS Ctrl 1-r001.d	Sample		AM 6.1.2 Cannabinoids by LCQQQ	Positive Control-UTAK B1013 + WS060716
P2-A1	Blank	isp blood cannabinoids Poky 2016-1.m	Carryover blank2_r001.d	Blank		AM 6.1.2 Cannabinoids by LCQQQ	
P2-A9	Blank M2016-0837-1	isp blood cannabinoids Poky 2016-1.m	M2016-0837-1_BLK_r001.d	Blank		AM 6.1.2 Cannabinoids by LCQQQ	
P2-B2	M2016-0837-1	isp blood cannabinoids Poky 2016-1.m	M2016-0837-1-r001.d	Sample		AM 6.1.2 Cannabinoids by LCQQQ	Blood
P2-A9	Blank M2016-0911-1	isp blood cannabinoids Poky 2016-1.m	M2016-0911-1_BLK_r001.d	Blank		AM 6.1.2 Cannabinoids by LCQQQ	
P2-B3	M2016-0911-1	isp blood cannabinoids Poky 2016-1.m	M2016-0911-1-r001.d	Sample		AM 6.1.2 Cannabinoids by LCQQQ	Blood
P2-A9	Blank M2016-1177-5	isp blood cannabinoids Poky 2016-1.m	M2016-1177-5_BLK_r001.d	Blank		AM 6.1.2 Cannabinoids by LCQQQ	
P2-B4	M2016-1177-5	isp blood cannabinoids Poky 2016-1.m	M2016-1177-5-r001.d	Sample		AM 6.1.2 Cannabinoids by LCQQQ	Blood
P2-A9	Blank P2016-0641-1	isp blood cannabinoids Poky 2016-1.m	P2016-0641-1_BLK_r001.d	Blank		AM 6.1.2 Cannabinoids by LCQQQ	
P2-B5	P2016-0641-1	isp blood cannabinoids Poky 2016-1.m	P2016-0641-1-r001.d	Sample		AM 6.1.2 Cannabinoids by LCQQQ	Blood
P2-A9	Blank P2016-0642-1	isp blood cannabinoids Poky 2016-1.m	P2016-0642-1_BLK_r001.d	Blank		AM 6.1.2 Cannabinoids by LCQQQ	
P2-B6	P2016-0642-1	isp blood cannabinoids Poky 2016-1.m	P2016-0642-1-r001.d	Sample		AM 6.1.2 Cannabinoids by LCQQQ	Blood
P2-A1	Blank	isp blood cannabinoids Poky 2016-1.m	cann-Carryover blank3_r001.d	Blank		AM 6.1.2 Cannabinoids by LCQQQ	
P2-C3	Blood PC 2	isp blood cannabinoids Poky 2016-1.m	B-POS Ctrl 2-r001.d	Sample		AM 6.1.2 Cannabinoids by LCQQQ	Positive Control-UTAK B1013 + WS060716
P2-A1	Blank	isp blood cannabinoids Poky 2016-1.m	Carryover blank4_r001.d	Blank		AM 6.1.2 Cannabinoids by LCQQQ	

Sample Position	Sample Name	Method	Data File	Sample Type	Level Name	Comment	Info. ☺
P2-A9	Blank P2016-0668-1	isp blood cannabinoids Poky 2016-1.m	P2016-0668-1_BLK_r001.d	Blank		AM 6.1.2 Cannabinoids by LCQQQ	
P2-B7	P2016-0668-1	isp blood cannabinoids Poky 2016-1.m	P2016-0668-1-r001.d	Sample		AM 6.1.2 Cannabinoids by LCQQQ	Blood
P2-A9	Blank P2016-0694-1	isp blood cannabinoids Poky 2016-1.m	P2016-0694-1_BLK_r001.d	Blank		AM 6.1.2 Cannabinoids by LCQQQ	
P2-B8	P2016-0694-1	isp blood cannabinoids Poky 2016-1.m	P2016-0694-1-r001.d	Sample		AM 6.1.2 Cannabinoids by LCQQQ	Blood
P2-A9	Blank P2016-0752-1	isp blood cannabinoids Poky 2016-1.m	P2016-0752-1_BLK_r001.d	Blank		AM 6.1.2 Cannabinoids by LCQQQ	
P2-B9	P2016-0752-1	isp blood cannabinoids Poky 2016-1.m	P2016-0752-1-r001.d	Sample		AM 6.1.2 Cannabinoids by LCQQQ	Blood
P2-A9	Blank P2016-0761-1	isp blood cannabinoids Poky 2016-1.m	P2016-0761-1_BLK_r001.d	Blank		AM 6.1.2 Cannabinoids by LCQQQ	
P2-C1	P2016-0761-1	isp blood cannabinoids Poky 2016-1.m	P2016-0761-1-r001.d	Sample		AM 6.1.2 Cannabinoids by LCQQQ	Blood
P2-A9	Blank P2016-1006-1	isp blood cannabinoids Poky 2016-1.m	P2016-1006-1_BLK_r001.d	Blank		AM 6.1.2 Cannabinoids by LCQQQ	
P2-C2	P2016-1006-1	isp blood cannabinoids Poky 2016-1.m	P2016-1006-1-r001.d	Sample		AM 6.1.2 Cannabinoids by LCQQQ	Blood
P2-A1	Blank	isp blood cannabinoids Poky 2016-1.m	Blank3-r001.d	Blank		AM 6.1.2 Cannabinoids by LCQQQ	Blood
P1-F9	Blank	Benzos_Z_Drugs_ACN_FA_ISP_2016.m	BZ-Blank1-r001.d	Blank		AM 6.1.1 Benzo and Z by LCQQQ	Blood
P1-F9	Blank	Benzos_Z_Drugs_ACN_FA_ISP_2016.m	BZ-Blank2-r001.d	Blank		AM 6.1.1 Benzo and Z by LCQQQ	Blood
P1-F7	10 ngmL	Benzos_Z_Drugs_ACN_FA_ISP_2016.m	BZ-10 ngmL-r001.d	Calibration	2	AM 6.1.1 Benzo and Z by LCQQQ	
P1-F6	25 ngmL	Benzos_Z_Drugs_ACN_FA_ISP_2016.m	BZ-25 ngmL_r001.d	Calibration	3	AM 6.1.1 Benzo and Z by LCQQQ	
P1-F5	50 ngmL	Benzos_Z_Drugs_ACN_FA_ISP_2016.m	BZ-50 ngmL_r001.d	Calibration	4	AM 6.1.1 Benzo and Z by LCQQQ	
P1-F4	100 ngmL	Benzos_Z_Drugs_ACN_FA_ISP_2016.m	BZ-100 ngmL_r001.d	Calibration	5	AM 6.1.1 Benzo and Z by LCQQQ	
P1-F3	500 ngmL	Benzos_Z_Drugs_ACN_FA_ISP_2016.m	BZ-500 ngmL_r001.d	Calibration	6	AM 6.1.1 Benzo and Z by LCQQQ	
P1-F2	1000 ngmL	Benzos_Z_Drugs_ACN_FA_ISP_2016.m	BZ-1000 ngmL_r001.d	Calibration	7	AM 6.1.1 Benzo and Z by LCQQQ	
P1-F1	3000 ngmL	Benzos_Z_Drugs_ACN_FA_ISP_2016.m	BZ-3000 ngmL_r001.d	Calibration	8	AM 6.1.1 Benzo and Z by LCQQQ	
P1-F9	Blank	Benzos_Z_Drugs_ACN_FA_ISP_2016.m	BZ-Carryover blank1_r001.d	Blank			

Sample Position	Sample Name	Method	Data File	Sample Type	Level Name	Comment	Info. ۞
						AM 6.1.1 Benzo and Z by LCQQQ	
P1-E9	Negative Blood Control	Benzos_Z_Drugs_ACN_FA_ISP_2016.m	BZ-NC-B_r001.d	Sample		AM 6.1.1 Benzo and Z by LCQQQ	UTAK Negative Whole Blood LOT B1013
P1-E8	Positive Blood Control	Benzos_Z_Drugs_ACN_FA_ISP_2016.m	BZ-PC-B-r001.d	Sample		AM 6.1.1 Benzo and Z by LCQQQ	Benzodiazepines Mix Cerilliant lot FE012413-02 in UTAK LOT B1013
P1-E9	Blank - M2016-1177-5	Benzos_Z_Drugs_ACN_FA_ISP_2016.m	BZ-Carryover blank-M2016-1177-5_r001.d	Blank		AM 6.1.1 Benzo and Z by LCQQQ	
P1-E7	M2016-1177-5	Benzos_Z_Drugs_ACN_FA_ISP_2016.m	BZ-M2016-1177-5-r001.d	Sample		AM 6.1.1 Benzo and Z by LCQQQ	Blood
P1-E9	Blank - M2016-1250-1	Benzos_Z_Drugs_ACN_FA_ISP_2016.m	BZ-Carryover blank-M2016-1250-1_r001.d	Blank		AM 6.1.1 Benzo and Z by LCQQQ	
P1-E6	M2016-1250-1	Benzos_Z_Drugs_ACN_FA_ISP_2016.m	BZ-M2016-1250-1-r001.d	Sample		AM 6.1.1 Benzo and Z by LCQQQ	Blood
P1-E9	Blank - M2016-1288-1	Benzos_Z_Drugs_ACN_FA_ISP_2016.m	BZ-Carryover blank-M2016-1288-1_r001.d	Blank		AM 6.1.1 Benzo and Z by LCQQQ	
P1-E5	M2016-1288-1	Benzos_Z_Drugs_ACN_FA_ISP_2016.m	BZ-M2016-1288-1-r001.d	Sample		AM 6.1.1 Benzo and Z by LCQQQ	Blood
P1-E9	Blank - P2016-0550-1	Benzos_Z_Drugs_ACN_FA_ISP_2016.m	BZ-Carryover blank-P2016-0550-1_r001.d	Blank		AM 6.1.1 Benzo and Z by LCQQQ	
P1-E4	P2016-0550-1	Benzos_Z_Drugs_ACN_FA_ISP_2016.m	BZ-P2016-0550-1-r001.d	Sample		AM 6.1.1 Benzo and Z by LCQQQ	Blood
P1-E9	Blank - P2016-0571-1	Benzos_Z_Drugs_ACN_FA_ISP_2016.m	BZ-Carryover blank-P2016-0571-1_r001.d	Blank		AM 6.1.1 Benzo and Z by LCQQQ	
P1-E3	P2016-0571-1	Benzos_Z_Drugs_ACN_FA_ISP_2016.m	BZ-P2016-0571-1-r001.d	Sample		AM 6.1.1 Benzo and Z by LCQQQ	Blood
P1-E9	Blank - P2016-0587-1	Benzos_Z_Drugs_ACN_FA_ISP_2016.m	BZ-Carryover blank-P2016-0587-1_r001.d	Blank		AM 6.1.1 Benzo and Z by LCQQQ	
P1-E2	P2016-0587-1	Benzos_Z_Drugs_ACN_FA_ISP_2016.m	BZ-P2016-0587-1-r001.d	Sample		AM 6.1.1 Benzo and Z by LCQQQ	Blood
P1-E9	Blank - P2016-0641-1	Benzos_Z_Drugs_ACN_FA_ISP_2016.m	BZ-Carryover blank-P2016-0641-1_r001.d	Blank		AM 6.1.1 Benzo and Z by LCQQQ	
P1-E1	P2016-0641-1	Benzos_Z_Drugs_ACN_FA_ISP_2016.m	BZ-P2016-0641-1-r001.d	Sample		AM 6.1.1 Benzo and Z by LCQQQ	Blood
P1-E9	Blank - P2016-0752-1	Benzos_Z_Drugs_ACN_FA_ISP_2016.m	BZ-Carryover blank-P2016-0752-1_r001.d	Blank		AM 6.1.1 Benzo and Z by LCQQQ	
P1-D9	P2016-0752-1	Benzos_Z_Drugs_ACN_FA_ISP_2016.m	BZ-P2016-0752-1-r001.d	Sample		AM 6.1.1 Benzo and Z by LCQQQ	Blood
P1-E9	Blank - P2016-0791-1	Benzos_Z_Drugs_ACN_FA_ISP_2016.m	BZ-Carryover blank-P2016-0791-1_r001.d	Blank		AM 6.1.1 Benzo and Z by LCQQQ	

Sample Position	Sample Name	Method	Data File	Sample Type	Level Name	Comment	Info. 
P1-D8	P2016-0791-1	Benzos_Z_Drugs_ACN_FA_ISP_2016.m	BZ-P2016-0791-1-r001.d	Sample		AM 6.1.1 Benzo and Z by LCQQQ	Blood
P1-E9	Blank - P2016-0880-1	Benzos_Z_Drugs_ACN_FA_ISP_2016.m	BZ-Carryover blank-P2016-0880-1_r001.d	Blank		AM 6.1.1 Benzo and Z by LCQQQ	
P1-D7	P2016-0880-1	Benzos_Z_Drugs_ACN_FA_ISP_2016.m	BZ-P2016-0880-1-r001.d	Sample		AM 6.1.1 Benzo and Z by LCQQQ	Blood
P1-F9	Blank	Benzos_Z_Drugs_ACN_FA_ISP_2016.m	BZ-Carryover blank3_r001.d	Blank		AM 6.1.1 Benzo and Z by LCQQQ	

ISP Forensics Calibration Curve Report

Batch Data Path C:\MassHunter\Data\2016\Combined\081816 CS\QuantResults\818canpoc.batch.bin

Last Calib Update 8/22/2016 1:37 PM

Analyst Name

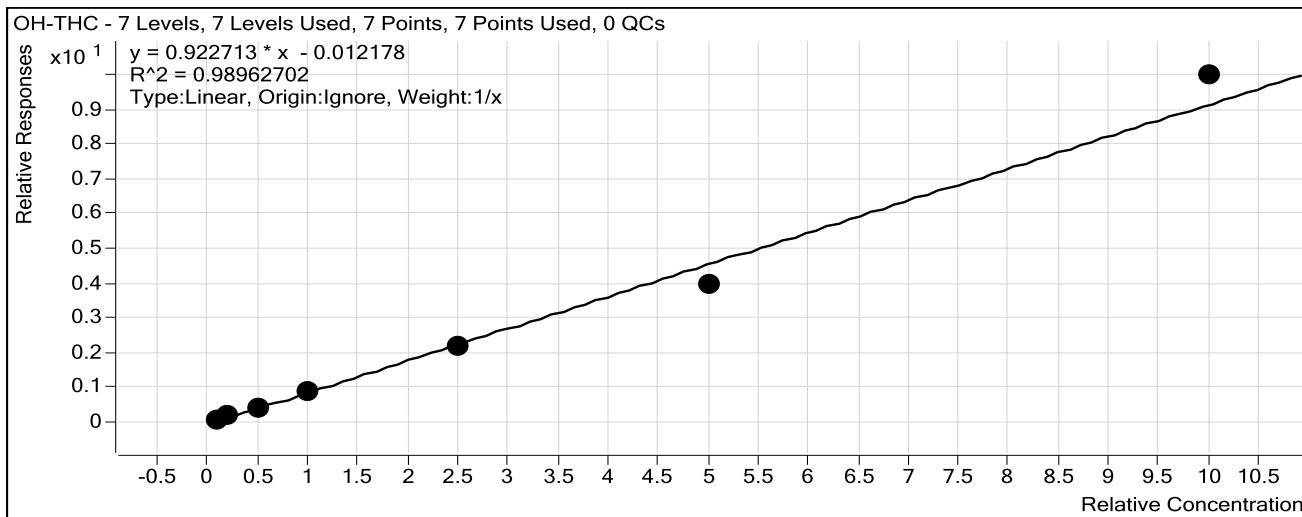
ISP TOX

Target Compound *OH-THC*

OH-THC

Internal Standard

OH-THC-d3



Sample	Level	Enabled	Exp Conc	Final Conc	Accuracy
Blood: 1_5 ng/mL	1	<input checked="" type="checkbox"/>	1	1.1	105.9
Blood: 2_10 ng/mL	2	<input checked="" type="checkbox"/>	2	2.2	111.2
Blood: 5_25 ng/mL	3	<input checked="" type="checkbox"/>	5	4.7	94.5
Blood: 10_50 ng/mL	4	<input checked="" type="checkbox"/>	10	10.0	99.8
Blood: 25_125 ng/mL	5	<input checked="" type="checkbox"/>	25	23.5	93.8
Blood: 50_250 ng/mL	6	<input checked="" type="checkbox"/>	50	43.2	86.5
Blood: 100_500 ng/mL	7	<input checked="" type="checkbox"/>	100	108.3	108.3

ISP Forensics Calibration Curve Report

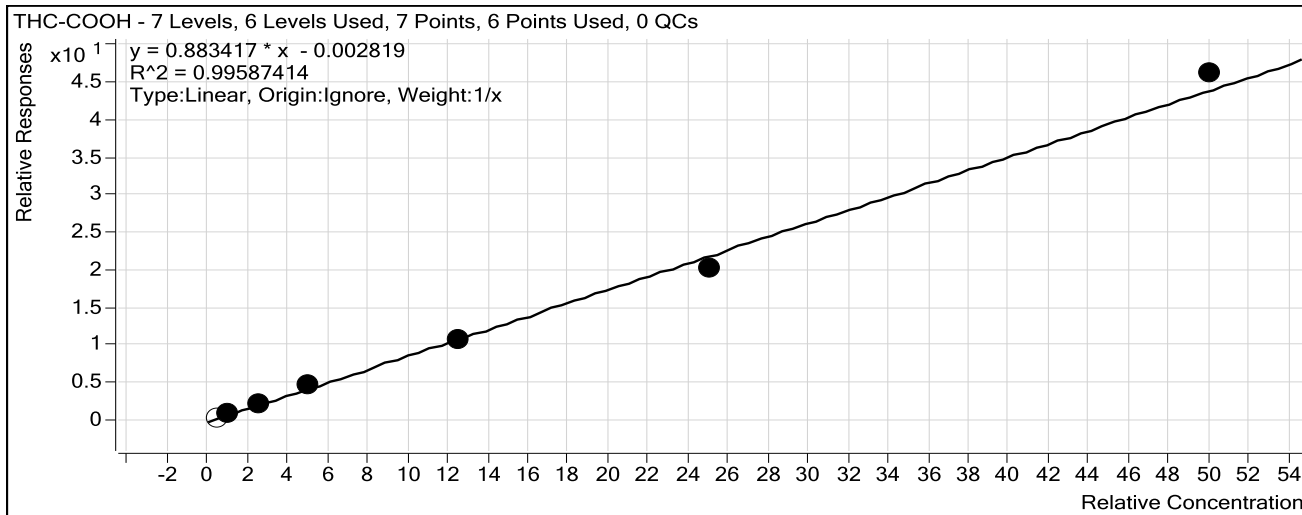
Batch Data Path C:\MassHunter\Data\2016\Combined\081816 CS\QuantResults\818canpoc.batch.bin

Last Calib Update 8/22/2016 1:37 PM

Analyst Name ISP TOX

Target Compound *THC-COOH*

Internal Standard *THC-COOH-d3*



Sample	Level	Enabled	Exp Conc	Final Conc	Accuracy
Blood: 1_5 ng/mL	1	<input type="checkbox"/>	5	4.8	96.5
Blood: 2_10 ng/mL	2	<input checked="" type="checkbox"/>	10	10.3	102.6
Blood: 5_25 ng/mL	3	<input checked="" type="checkbox"/>	25	25.0	99.8
Blood: 10_50 ng/mL	4	<input checked="" type="checkbox"/>	50	52.2	104.3
Blood: 25_125 ng/mL	5	<input checked="" type="checkbox"/>	125	121.9	97.5
Blood: 50_250 ng/mL	6	<input checked="" type="checkbox"/>	250	228.1	91.2
Blood: 100_500 ng/mL	7	<input checked="" type="checkbox"/>	500	522.6	104.5

ISP Forensics Calibration Curve Report

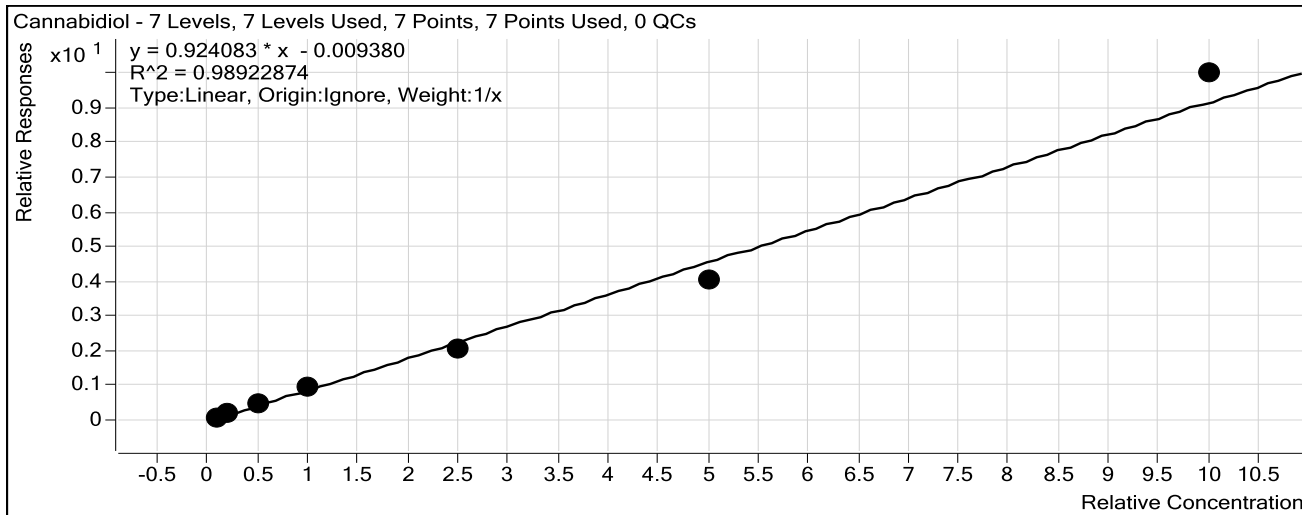
Batch Data Path C:\MassHunter\Data\2016\Combined\081816 CS\QuantResults\818canpoc.batch.bin

Last Calib Update 8/22/2016 1:37 PM

Analyst Name ISP TOX

Target Compound *Cannabidiol*

Internal Standard *Cannabidiol-d3*



Sample	Level	Enabled	Exp Conc	Final Conc	Accuracy
Blood: 1_5 ng/mL	1	<input checked="" type="checkbox"/>	1	1.0	99.6
Blood: 2_10 ng/mL	2	<input checked="" type="checkbox"/>	2	2.2	109.4
Blood: 5_25 ng/mL	3	<input checked="" type="checkbox"/>	5	5.1	101.7
Blood: 10_50 ng/mL	4	<input checked="" type="checkbox"/>	10	10.4	104.4
Blood: 25_125 ng/mL	5	<input checked="" type="checkbox"/>	25	22.3	89.1
Blood: 50_250 ng/mL	6	<input checked="" type="checkbox"/>	50	43.7	87.4
Blood: 100_500 ng/mL	7	<input checked="" type="checkbox"/>	100	108.3	108.3

ISP Forensics Calibration Curve Report

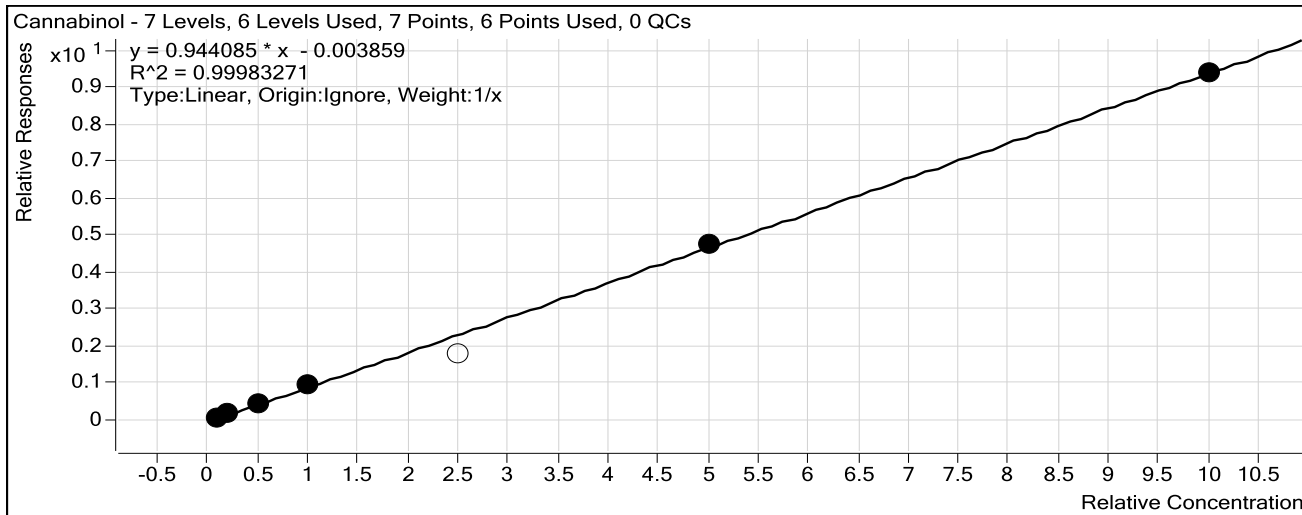
Batch Data Path C:\MassHunter\Data\2016\Combined\081816 CS\QuantResults\818canpoc.batch.bin

Last Calib Update 8/22/2016 1:37 PM

Analyst Name ISP TOX

Target Compound *Cannabinol*

Internal Standard *Cannabinol-d3*



Sample	Level	Enabled	Exp Conc	Final Conc	Accuracy
Blood: 1_5 ng/mL	1	<input checked="" type="checkbox"/>	1	0.9	93.2
Blood: 2_10 ng/mL	2	<input checked="" type="checkbox"/>	2	2.1	102.7
Blood: 5_25 ng/mL	3	<input checked="" type="checkbox"/>	5	5.0	100.8
Blood: 10_50 ng/mL	4	<input checked="" type="checkbox"/>	10	10.3	103.3
Blood: 25_125 ng/mL	5	<input type="checkbox"/>	25	18.8	75.1
Blood: 50_250 ng/mL	6	<input checked="" type="checkbox"/>	50	50.3	100.7
Blood: 100_500 ng/mL	7	<input checked="" type="checkbox"/>	100	99.3	99.3

ISP Forensics Calibration Curve Report

Batch Data Path C:\MassHunter\Data\2016\Combined\081816 CS\QuantResults\818canpoc.batch.bin

Last Calib Update 8/22/2016 1:37 PM

Analyst Name

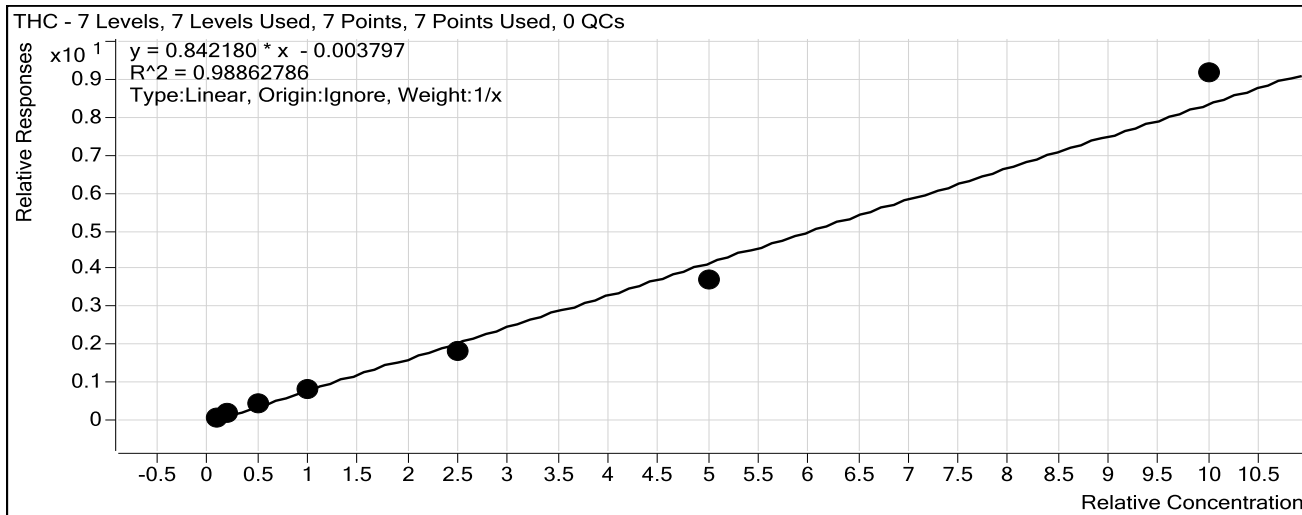
ISP TOX

Target Compound

THC

Internal Standard

THC-d3



Sample	Level	Enabled	Exp Conc	Final Conc	Accuracy
Blood: 1_5 ng/mL	1	<input checked="" type="checkbox"/>	1	1.1	110.2
Blood: 2_10 ng/mL	2	<input checked="" type="checkbox"/>	2	2.1	106.9
Blood: 5_25 ng/mL	3	<input checked="" type="checkbox"/>	5	4.9	98.4
Blood: 10_50 ng/mL	4	<input checked="" type="checkbox"/>	10	10.0	100.2
Blood: 25_125 ng/mL	5	<input checked="" type="checkbox"/>	25	21.8	87.1
Blood: 50_250 ng/mL	6	<input checked="" type="checkbox"/>	50	44.1	88.3
Blood: 100_500 ng/mL	7	<input checked="" type="checkbox"/>	100	108.9	108.9

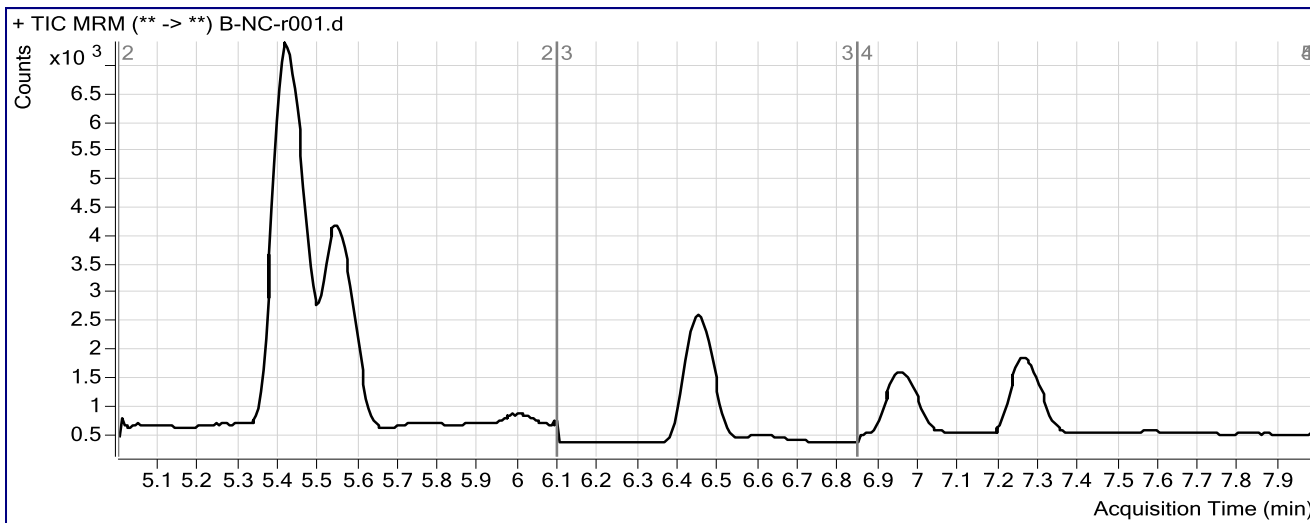
ISP FORENSICS Pocatello Cannabinoid Analysis Report

Batch Data Path	C:\MassHunter\Data\2016\Combined\081816 CS\QuantResults\818canpoc.batch.bin		
Analysis Time	8/22/2016 1:37 PM	Analyst Name	ISPUser
Report Time	8/22/2016 1:39 PM	Reporter Name	ISPUser
Last Calib Update	8/22/2016 1:37 PM	Batch State	Processed

Analysis Info

Acq Time	2016-08-18 13:04	Data File	B-NC-r001.d
Sample Type	Sample	Sample Name	Blood Negative Control
Dilution	1	Acq Method	isp blood cannabinoids Poky 2016-1.m
Position	P2-A9	Sample Info	Negative Blood UTAK Lot B1013
Inj Vol	-1	Comment	AM 6.1.2 Cannabinoids by LCQQQ

Sample Chromatogram



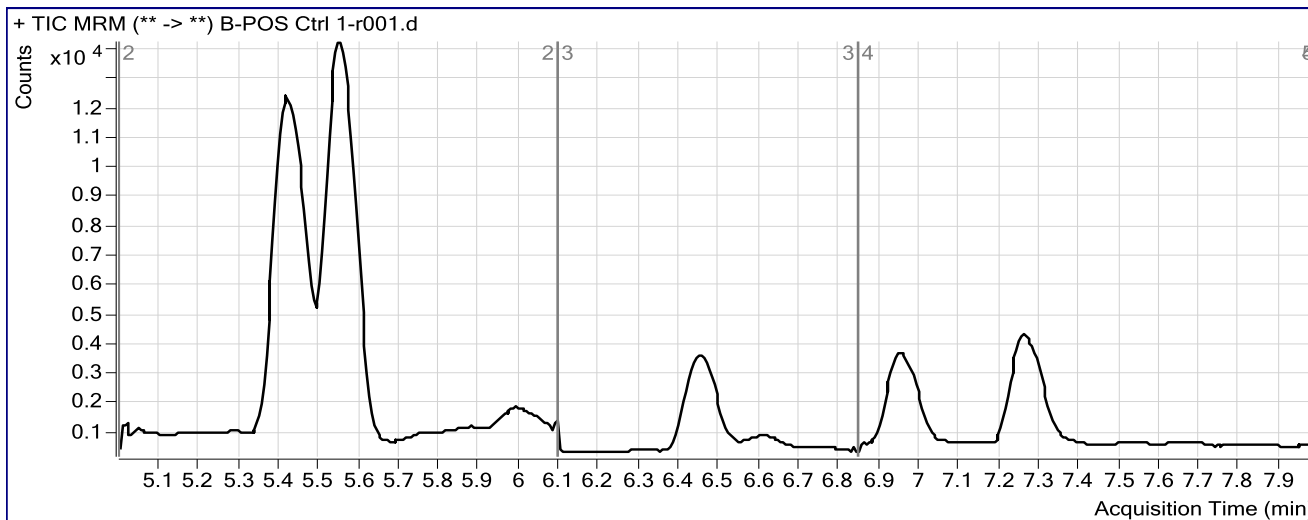
ISP FORENSICS Pocatello Cannabinoid Analysis Report

Batch Data Path	C:\MassHunter\Data\2016\Combined\081816 CS\QuantResults\818canpoc.batch.bin		
Analysis Time	8/22/2016 1:37 PM	Analyst Name	ISPUser
Report Time	8/22/2016 1:39 PM	Reporter Name	ISPUser
Last Calib Update	8/22/2016 1:37 PM	Batch State	Processed

Analysis Info

Acq Time	2016-08-18 13:17	Data File	B-POS Ctrl 1-r001.d
Sample Type	Sample	Sample Name	Blood PC 1
Dilution	1	Acq Method	isp blood cannabinoids Poky 2016-1.m
Position	P2-B1	Sample Info	Positive Control- UTAK B1013 + WS060716
Inj Vol	-1	Comment	AM 6.1.2 Cannabinoids by LCQQQ

Sample Chromatogram



Results

Compound	ISTD Compound	RT	Response	ISTD Resp	Resp Ratio	Final Conc
THC-COOH	THC-COOH-d3	5.558	13664	11943	1.1441	12.9825
Cannabinol	Cannabinol-d3	6.955	3386	8952	0.3783	4.0475
THC	THC-d3	7.266	1820	7515	0.2422	2.9207

ISP FORENSICS

Pocatello

Cannabinoid Analysis Report

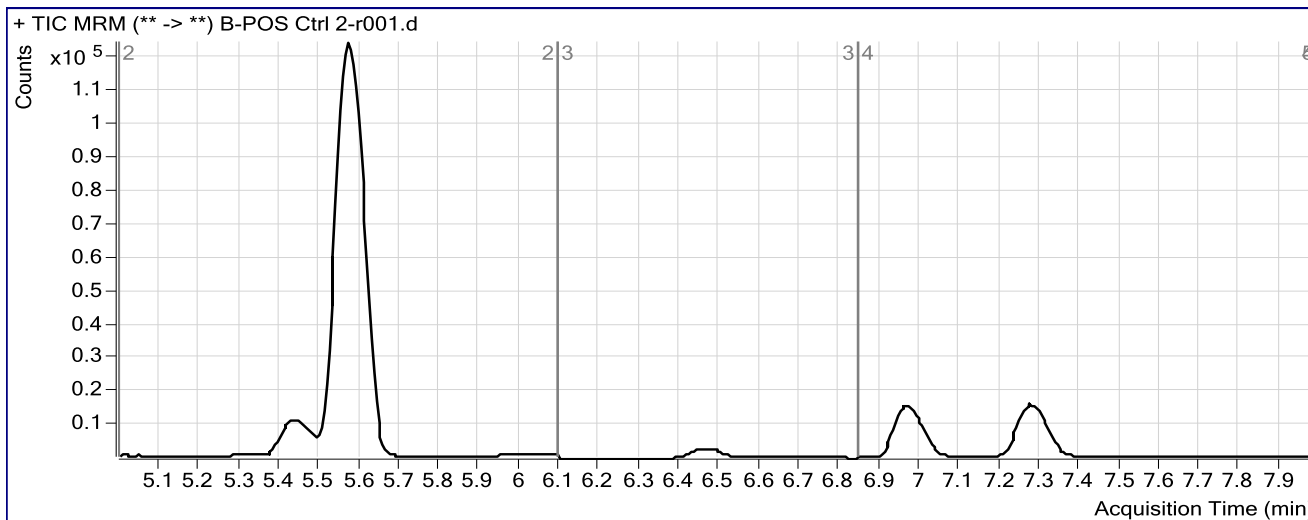
Batch Data Path	C:\MassHunter\Data\2016\Combined\081816 CS\QuantResults\818canpoc.batch.bin		
Analysis Time	8/22/2016 1:37 PM	Analyst Name	ISPUser
Report Time	8/22/2016 1:40 PM	Reporter Name	ISPUser
Last Calib Update	8/22/2016 1:37 PM	Batch State	Processed

Analysis Info

Acq Time	2016-08-18 16:10	Data File	B-POS Ctrl 2-r001.d
Sample Type	Sample	Sample Name	Blood PC 2
Dilution	1	Acq Method	isp blood cannabinoids Poky 2016-1.m
Position	P2-C3	Sample Info	Positive Control- UTAK B1013 + WS060716
Inj Vol	-1	Comment	AM 6.1.2 Cannabinoids by LCQQQ

CS

Sample Chromatogram



Results

Compound	ISTD Compound	RT	Response	ISTD Resp	Resp Ratio	Final Conc
THC-COOH	THC-COOH-d3	5.575	223386	10529	21.2167	240.1982
Cannabinol	Cannabinol-d3	6.967	43530	8628	5.0453	53.4817
THC	THC-d3	7.278	25677	6646	3.8633	45.9172